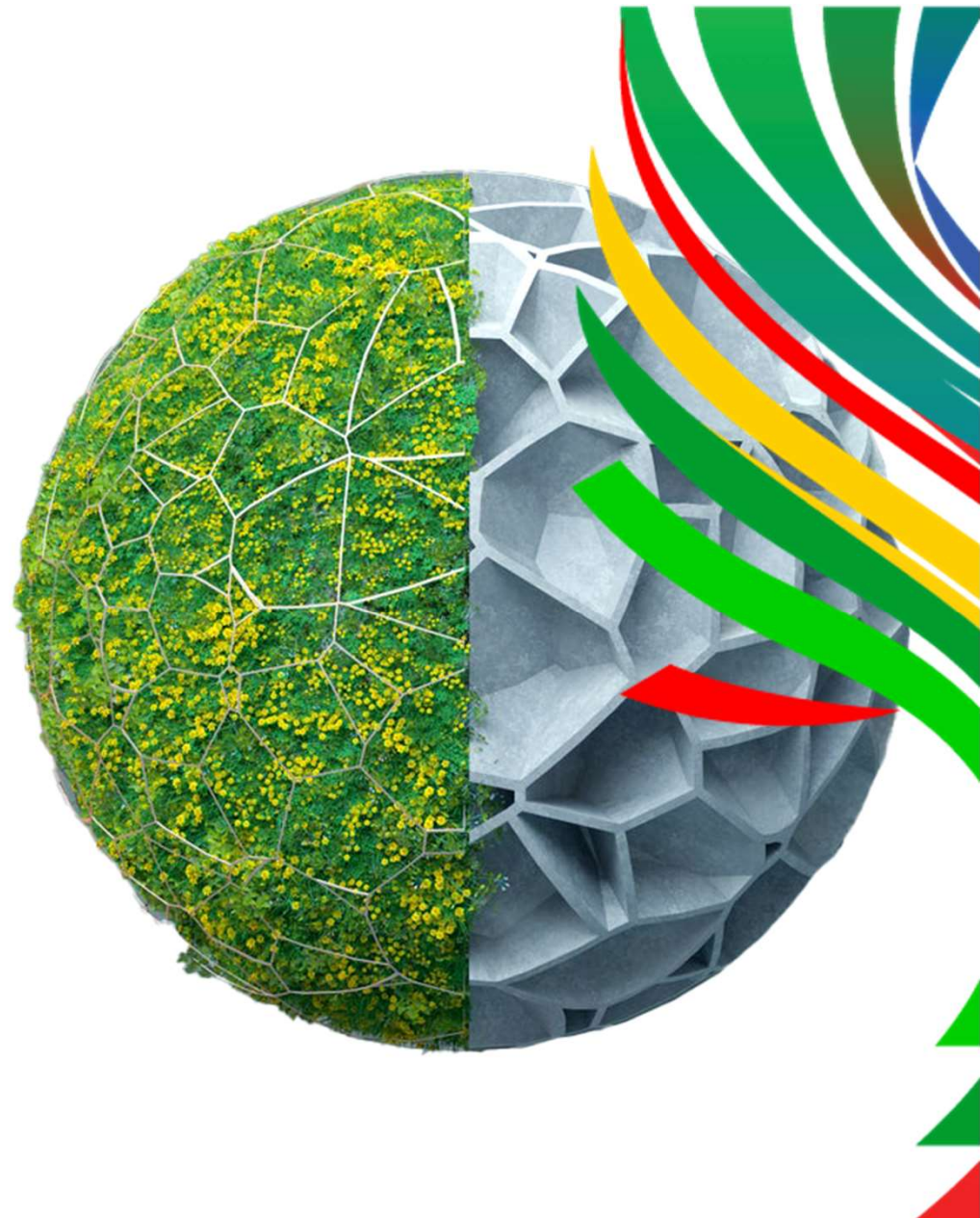




Inclusive Growth for a Sustainable Future

Introductory presentation





Business 20 (B20)

What is the B20?

The Business 20 (B20) is an **engagement group that serves as a bridge between the business community and the G20**. It aims to develop policy recommendations to the G20, which are made throughout the presidential year, virtually, by various task forces comprising business leaders from all G20 countries.

What are the objectives of the B20?

- 1 Represent the interests of the business community to the G20
- 2 Support the G20 with relevant policy recommendations
- 3 Foster dialogue between the public and private sectors within the G20 framework, as well as with international institutions



B20 Brazil 2024

Who is organizing the B20 Brazil?

The National Confederation of Industry (CNI) has been an active participant in B20 since its establishment in 2010. For the B20 Brazil, **CNI is the lead coordinator of the secretariat**, and it will provide comprehensive support for the preparation, implementation, and continuous monitoring of the process.

What is the theme of the B20 Brasil?

B20 Brasil's theme is aligned with the theme and priorities of the G20

G20 Building a fair world and a sustainable planet

- Social inclusion and the fight against hunger
- Energy transition and sustainable development
- Reform of global governance institutions

B20 Inclusive growth for a sustainable future

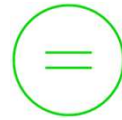
Key Milestones of B20 Brazil



B20 Brazil: Inclusive growth for a sustainable future



5 strategic axes



Promote inclusive growth and combat hunger, poverty, and inequality

Ensure social and economic development benefits all members of society, positively impacting health and well-being, and reducing disparities in access to opportunities and resources



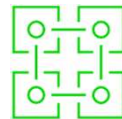
Accelerate a fair net zero transition

Accelerate the shift to a carbon-neutral economy by reducing greenhouse gas emissions, promoting sustainable environmental practices, and ensuring the transition benefits everyone by reducing social and economic disparities



Increase productivity through innovation

Drive economic growth by fostering creativity and the adoption of cutting-edge technologies to enhance productivity across all sectors



Foster the resilience of global value chains

Enhance the capacity of global value chains to resist disruptions, adapt to unforeseen challenges, and maintain readiness for managing emergencies



Enhance human capital

Invest in the development and well-being of individuals to build a skilled, healthy, and adaptable workforce capable of driving innovation, economic growth, and resilience in a volatile world

How is the theme of B20 Brazil implemented?

Through 7 task forces and 1 action council that formulate policy recommendations

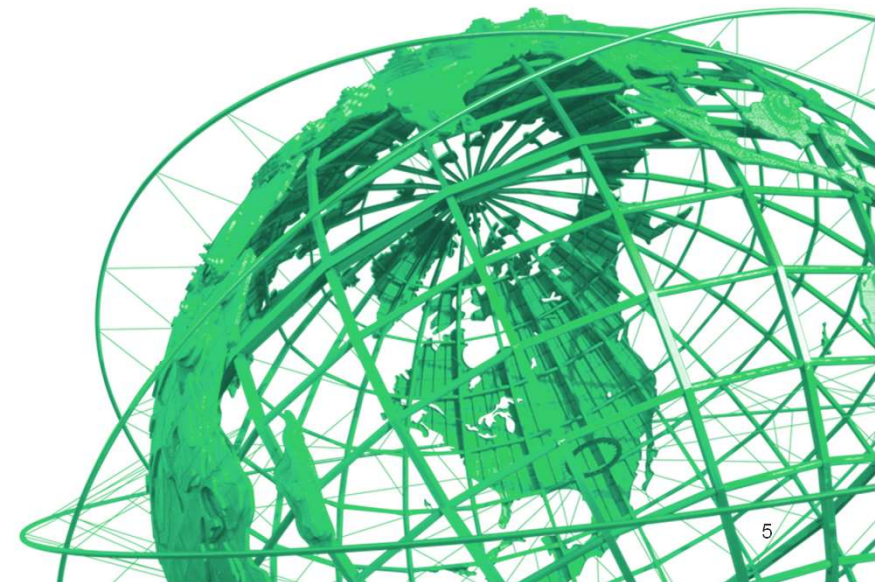
Each task force meets monthly in a virtual format (total of 4 to 5 meetings) and develops 3 to 4 policy recommendations, each containing 3 to 4 policy actions.

The documents of each task force will be consolidated into a single document.

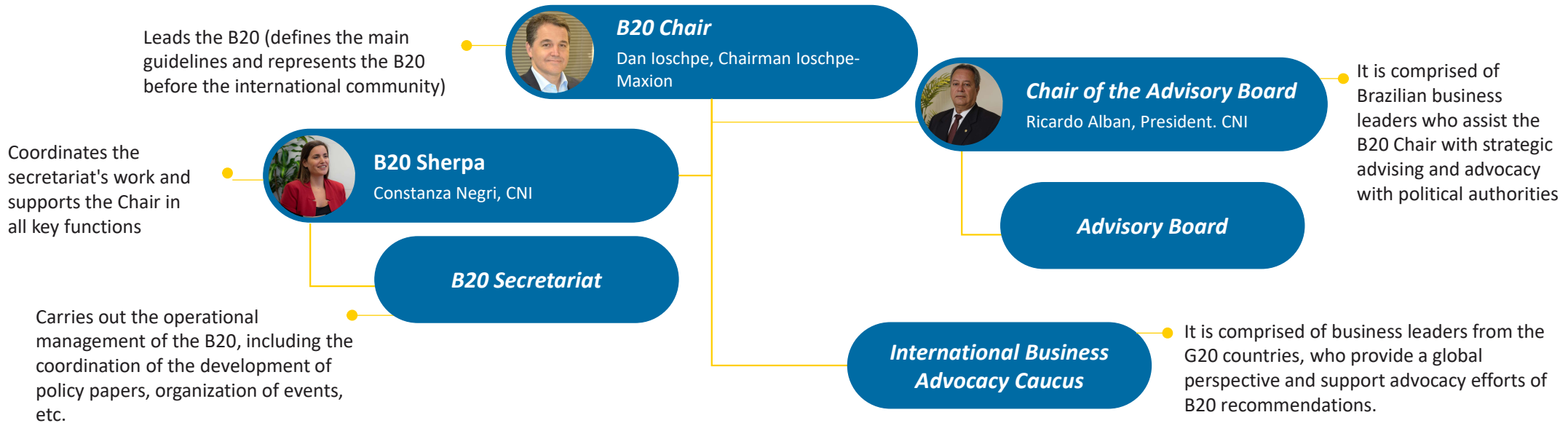
The pillars of B20 should guide the work of all task forces and the action council

...and advocate before the G20

The results of B20 will be advocated before the Brazilian government and the G20 governments, leveraging the extensive B20 network (e.g., global business community, and international organizations).



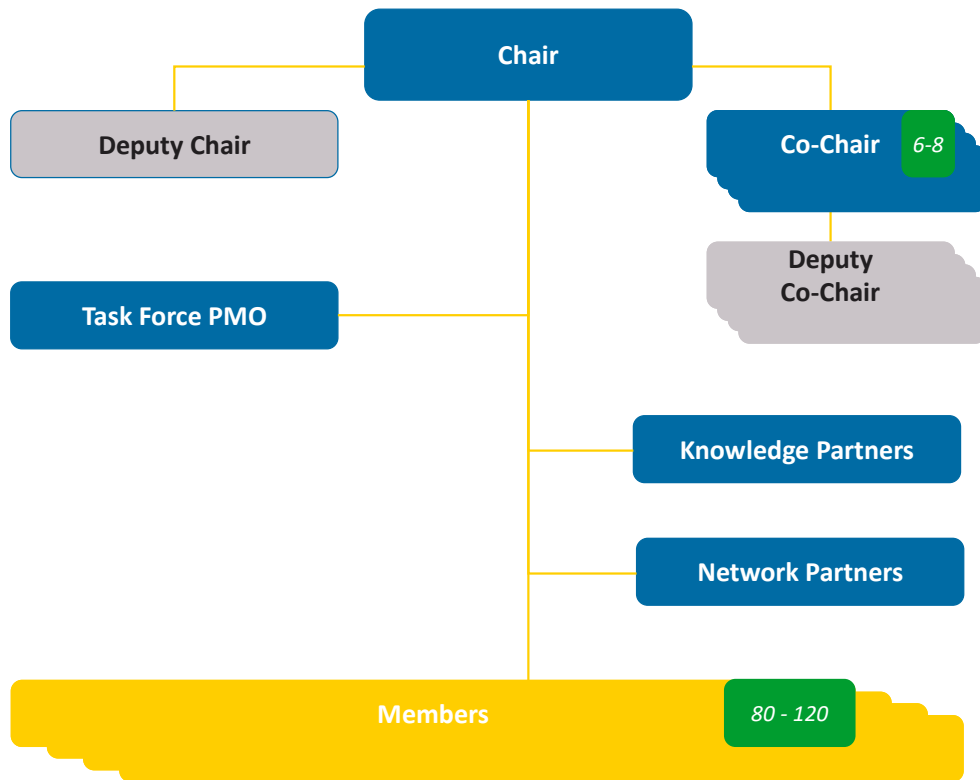
Organizational Structure of B20 Brazil



Task-Forces and Action Council



What is the structure of the task forces and action council?



Task Force/Action Council Chair

- Lead the policy papers drafting process
- Represents the group in all advocacy efforts

Deputy Chair

- Represents the Chair and facilitates meetings when the Chair cannot attend

Co-Chair

- Supports the drafting of policy documents and recommendations
- Supports the advocacy process

Deputy Co-chair

- Represents the Co-Chair in their absence.

Task Force/Action Council PMO

- Member of the Secretariat who coordinates the drafting of Policy Papers and task force meetings

Members

- Participates in the task force discussions and contributes to the drafting of the Policy Paper

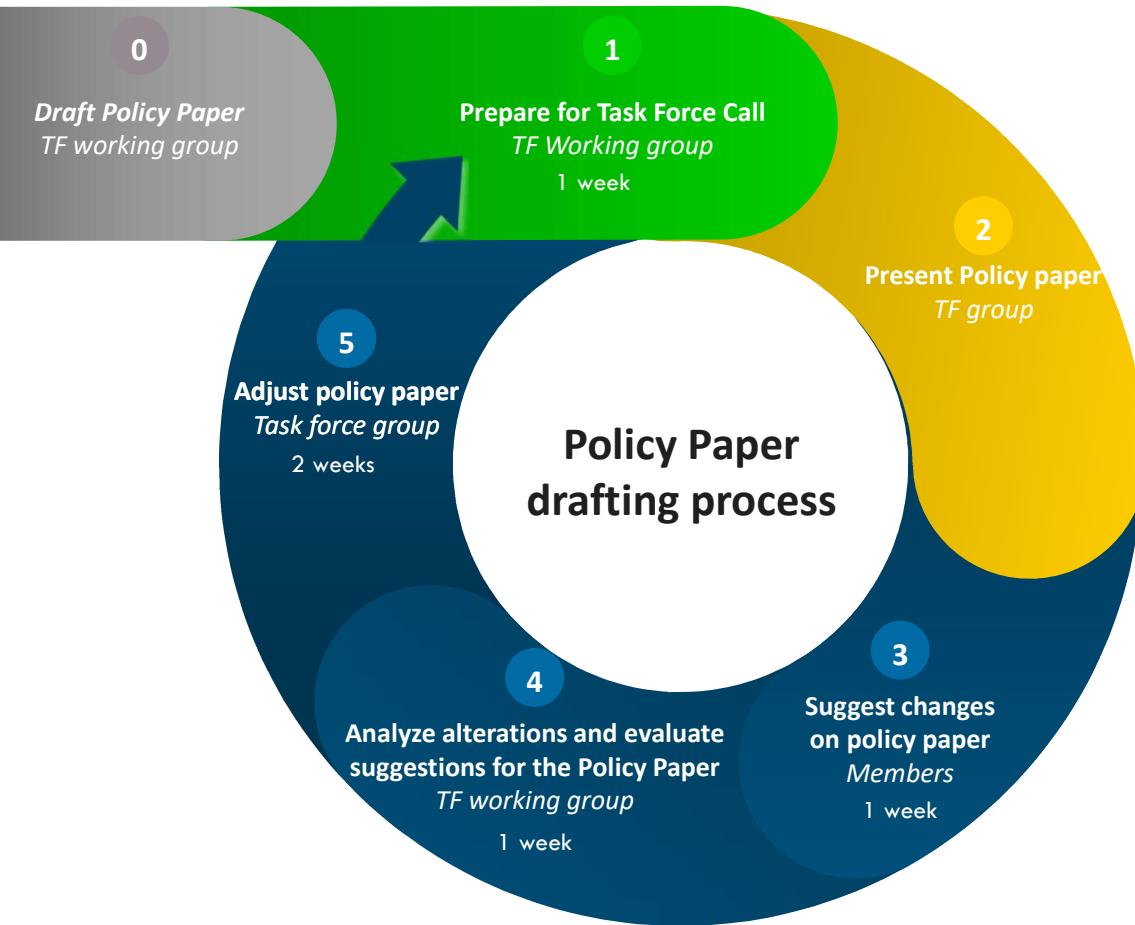
Knowledge Partners

- Global consultancy that works with the PMO, contributing with experience and knowledge in the task force/action council
- Produces content for the drafting of the policy paper

Network Partners

- International organizations and networks that contribute to the B20 process with their technical expertise and constituency.

Overview of Policy Paper Development



TF group: Chair/deputy, Co-Chair, PMO, KP, members

TF working group: PMO, KP

- Pre-TF Call
- TF Call
- Post TF-Call

- 0 Draft Policy Paper:** Prepare 1st Policy Paper draft based on the inception meeting
- 1 Prepare for Task Force call:** Discuss Policy Paper current version and prepare to present it on the Task Force Meeting
- 2 Present Policy Paper:** Present Policy Paper current version on the Task Force Meeting and discuss it with TF group
- 3 Suggest changes on Policy Paper:** Allow members to suggest changes on the Policy Paper via website
- 4 Analyze alterations and evaluate suggestions for the Policy Paper:** Collect, analyze and evaluate inputs shared by members according to relevance
- 5 Adjust Policy Paper:** Make changes to the Policy Paper version, considering members' inputs, KP searches and Chair's validation

The cycle repeats itself 4 to 5 times. Ad-hoc meetings involving specific members may also be necessary to reach a consensus on sensitive issues.

Guidelines for Policy Recommendations

Principles for Recommendation

Independent



Each recommendation can be **adopted independently** from the adoption of another one

Consistent



Recommendations should **not contradict each other**. Collectively, recommendations should support the B20 overall objective

Fact-based



Recommendations should be supported by **reliable data and recognized sources**

Impactful



Recommendations should be **relevant to the G20 and/or target international organizations** and institutions, and **have a clear impact**

Specific



The recommendations should be specific, and have a **clarity in making endorsement or refusal vis-à-vis a particular issue**

Actionable and Measurable



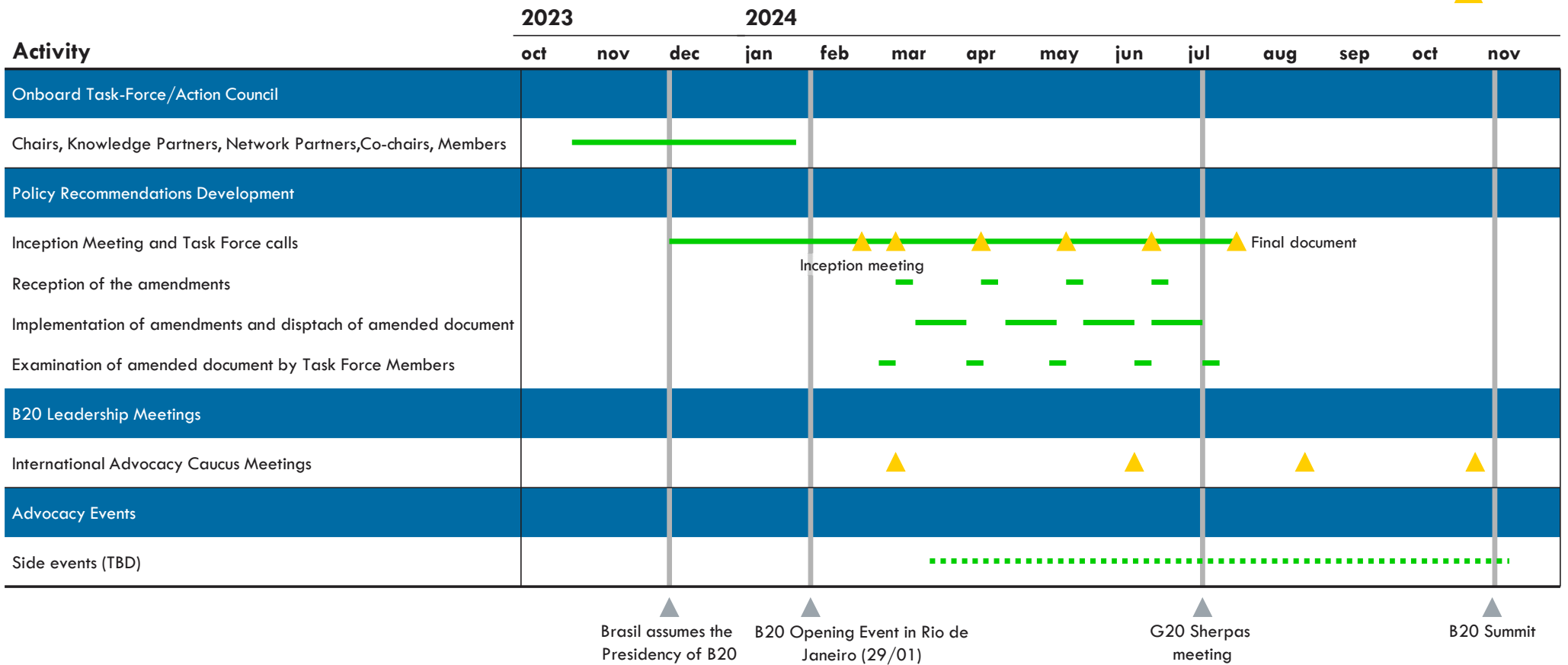
The recommendations should be **actionable and measurable** so that they can be adopted into **policies by G20 leaders**



Overview B20 Brasil Calendar

Preliminary

 Meetings





B20
BRASIL 2024
INCLUSIVE GROWTH FOR
A SUSTAINABLE FUTURE

Visit us at <https://b20brazil.org/>